



TK International
020 7794 8700
www.t-k.co.uk

Residential Sales
Residential Lettings
Property Management

Sales Office:
9 Heath Street
Hampstead
London NW3 6TP
E: sales@t-k.co.uk

Lettings Office:
16-18 Heath Street
Hampstead
London NW3 6TE
E: lettings@t-k.co.uk

tk.international
TK International
TK International

Est.
1998



Belsize Crescent Belsize Village NW3

Located close to the heart of bustling Belsize Village with its array of cafes, restaurants (and summer al-fresco dining), convenience shopping and within close proximity of both Belsize Park and Swiss Cottage underground stations, a beautifully appointed mid-terrace Period house of some 3,405sq ft, which has been refurbished and extended to provide excellent four bedroom family accommodation complimented by a walled 38' garden.

The generous, bright internal accommodation provides for an open plan 46'x20' kitchen/dining/family with utility room on the lower ground floor level, a large entrance lobby and elegant interconnecting reception rooms with nearly 12' ceiling heights and a guest WC on the raised ground floor.

Two over large double bedrooms make up the first floor (with potential to create a further bathroom on this level), a family bathroom on the next half landing with the principal suite of double bedroom, dressing area & en-suite bathroom taking up all of the second floor. A guest suite of double bedroom and en-suite bathroom is located on the third floor.

£5,000,000

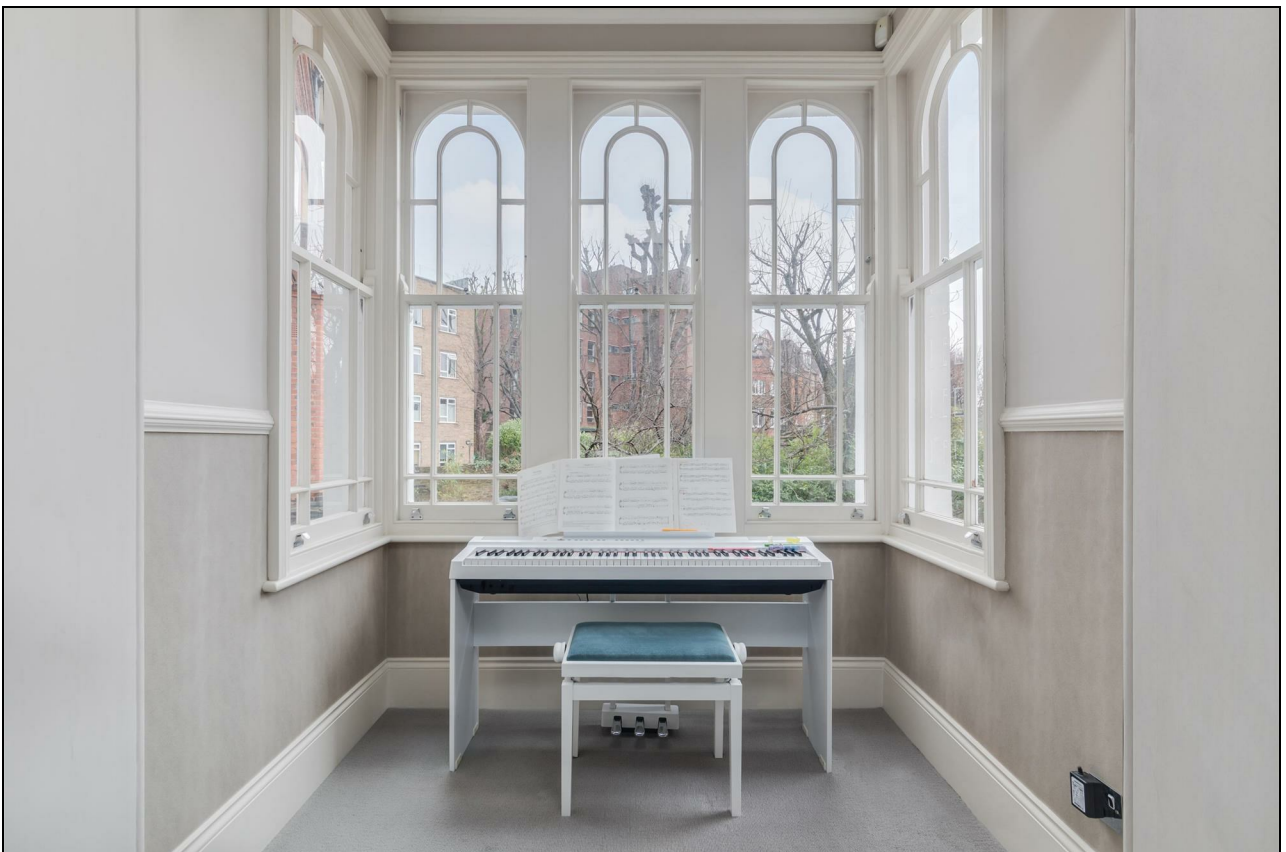
JOINT SOLE AGENT

Freehold













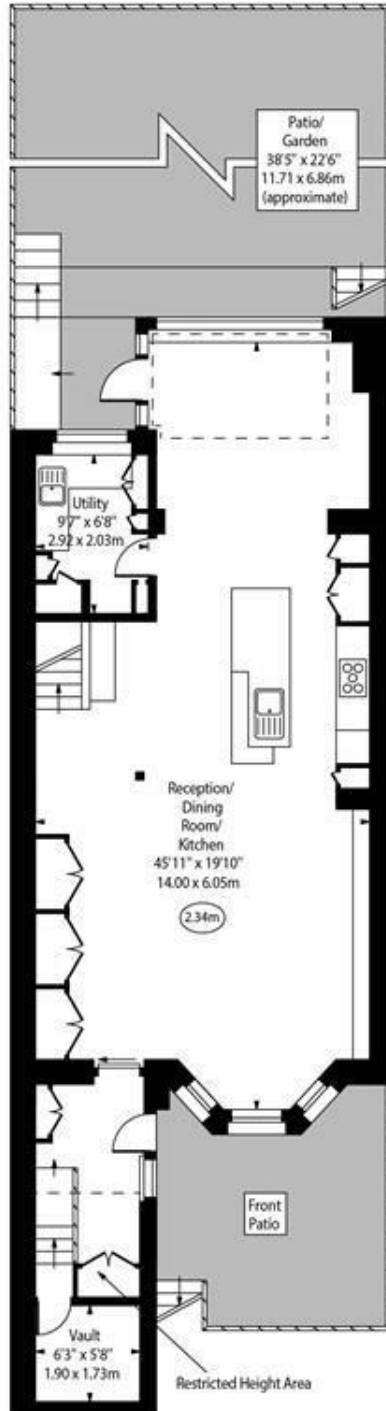




Belsize Crescent, NW3



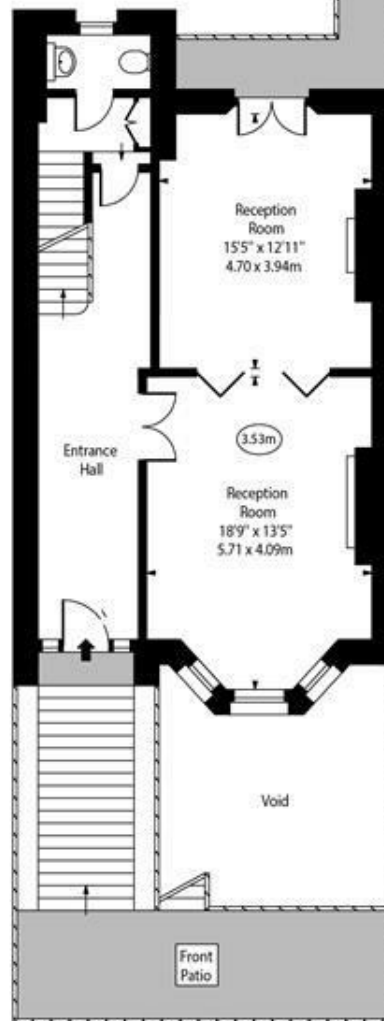
○ - Ceiling Height



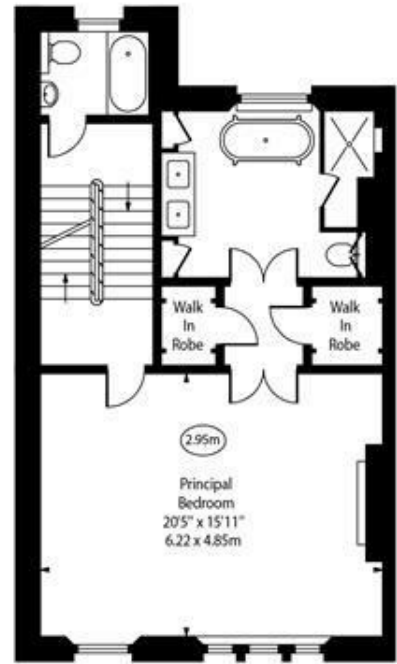
Lower Ground Floor



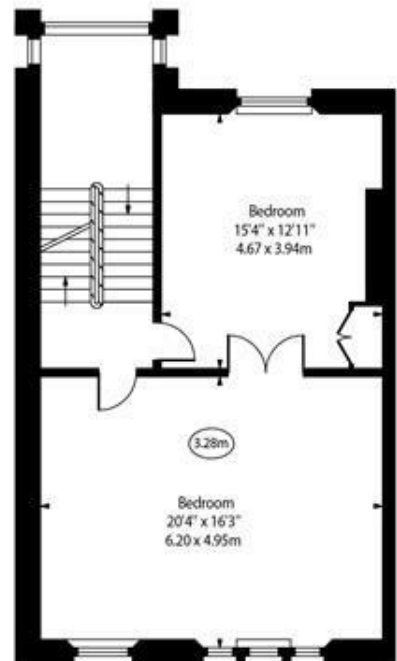
Third Floor



Upper Ground Floor



Second Floor



First Floor

Approx Gross Internal Area 3405 Sq Ft - 316.32 Sq M

Approx. Floor Area Including Restricted Heights 3540 Sq Ft - 328.87 Sq M

For Illustration Purposes Only - Not To Scale

www.goldlens.co.uk

Ref. No. 026566K